

POLIGRAE

from T_EX to printing house

Janusz Marian Nowacki

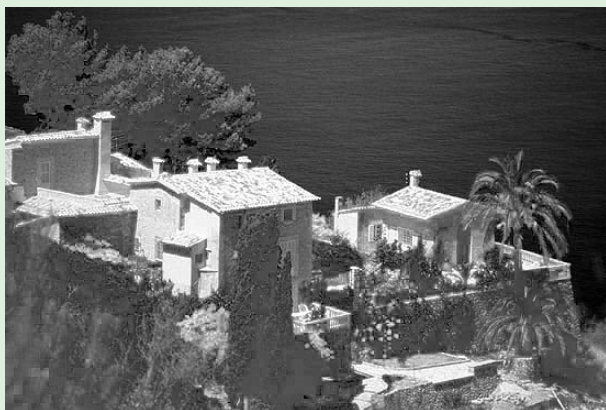
The *Poligraf* package is a format-independent support package for T_EX, facilitating the preparation of T_EX documents for printing in professional printing houses. *Poligraf* surrounds a page with graphical elements such as crop marks, registration marks, color steps, color bars etc. The package can also be used for colour separation (as an interface for the package CMYK-HAX). The *Poligraf* package was first presented at the BachoT_EX'96 conference.



EXAMPLE PICTURE

SEPARATIONS

CYAN



MAGENTA



YELLOW



BLACK





PRINT CYAN



PRINT CYAN+MAGENTA

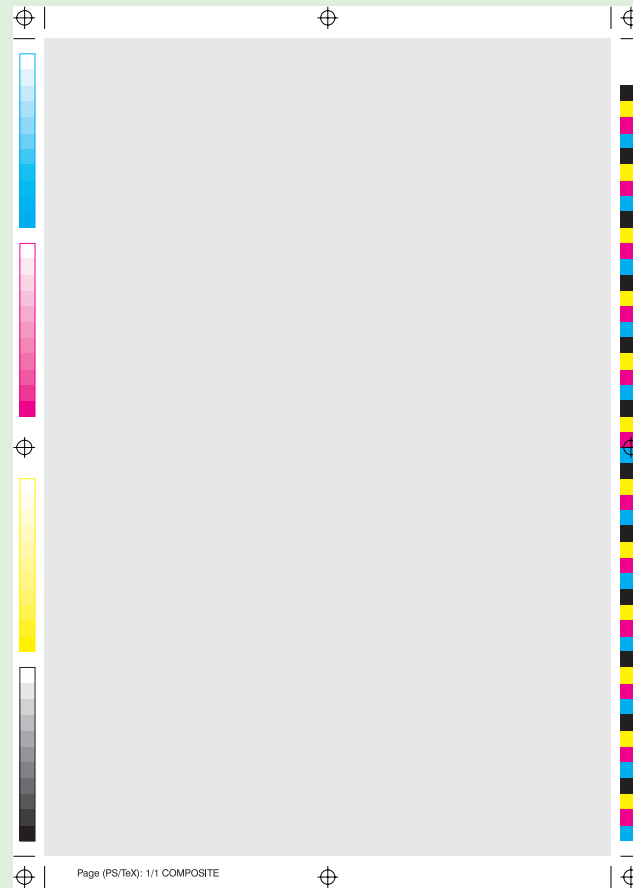


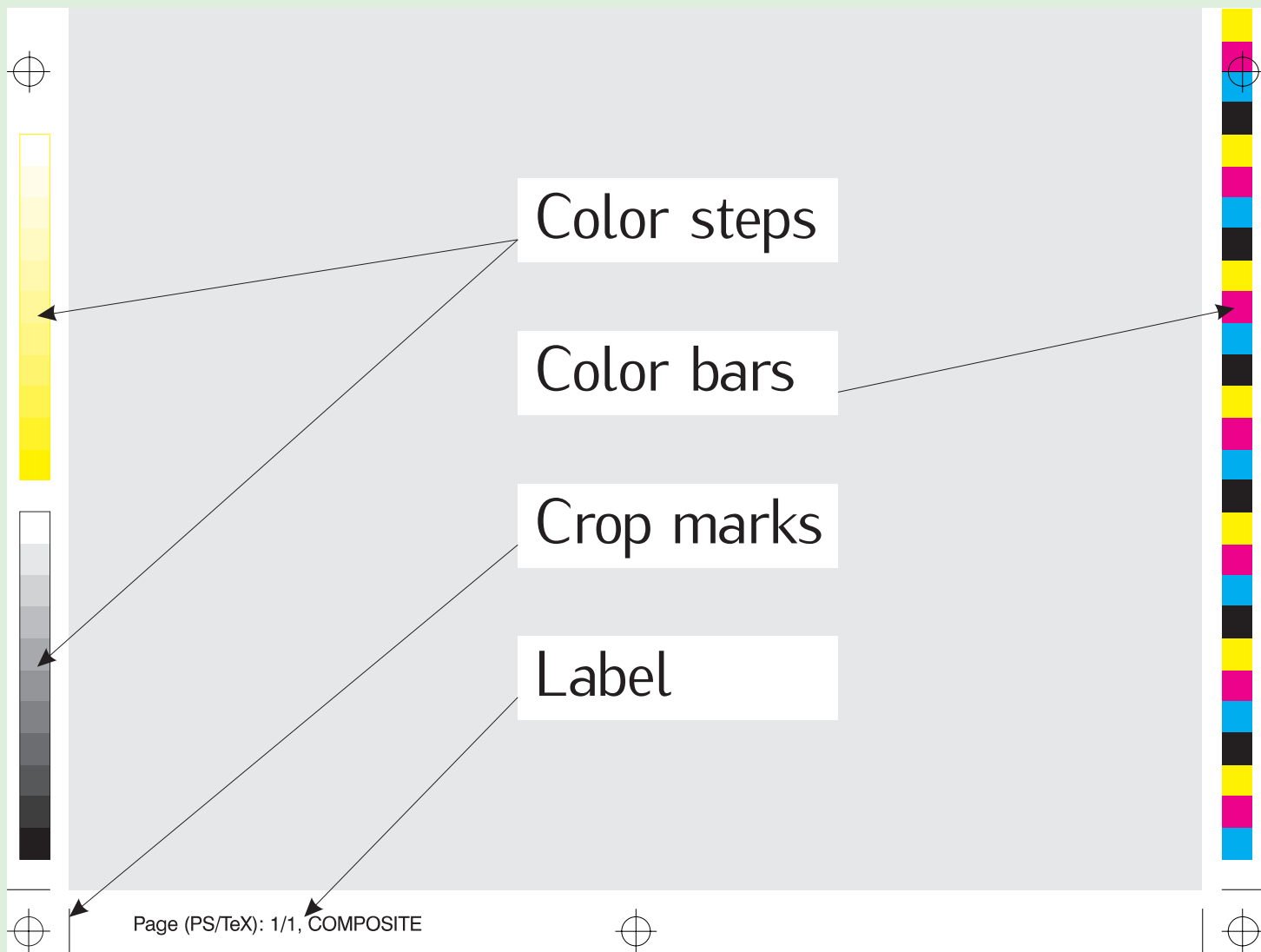
PRINT CYAN+MAGENTA+YELLOW

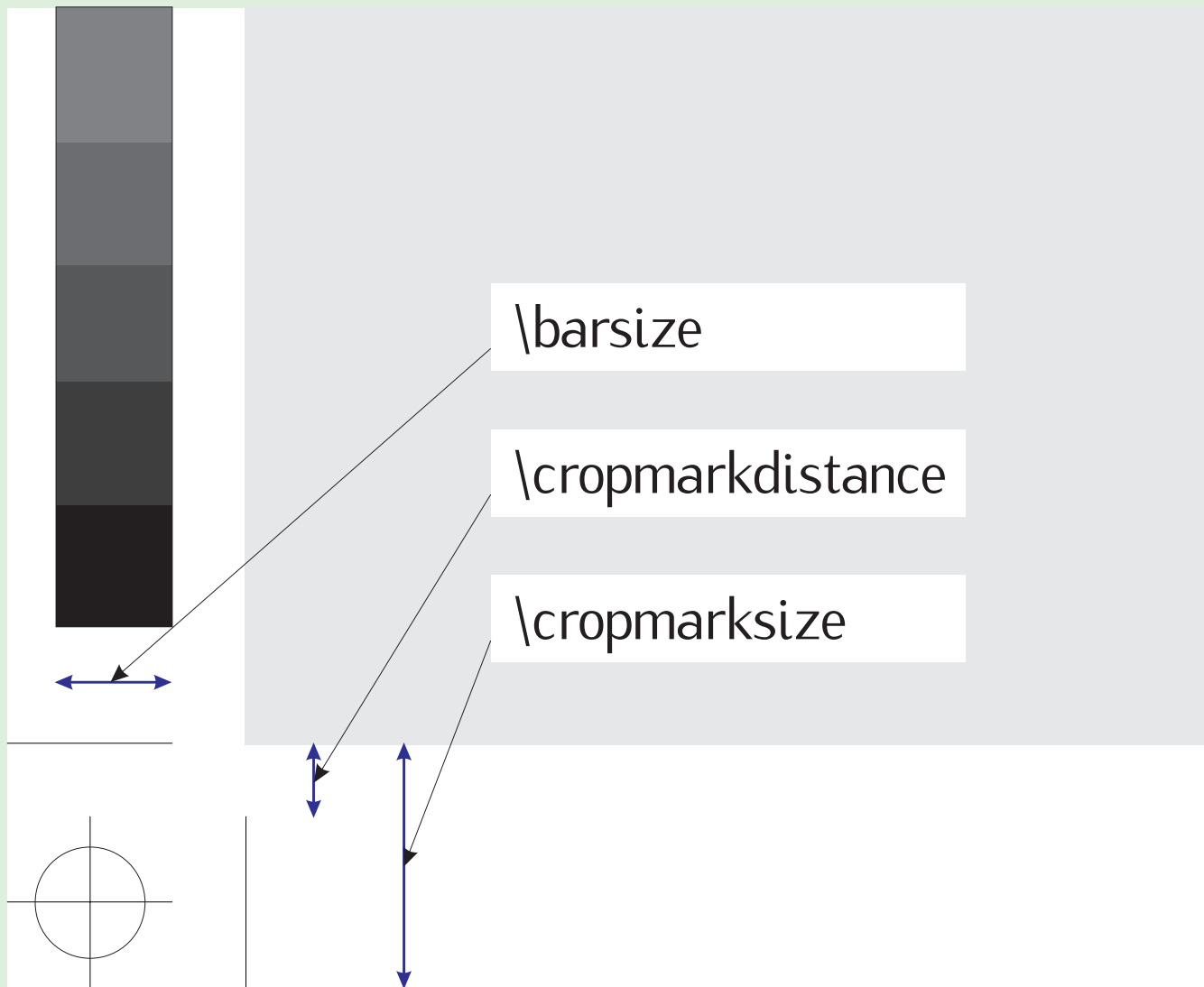


PRINT CYAN+MAGENTA+YELLOW+BLACK

The technology of printing requires that extra graphic elements should be added to a printed sheet







POLIGRAF package (www.gust.org.pl)

consists of:

- poligraf.sty – T_EX macros, 3.4 KB
- crops.pro – DVIPS header, 6.5 KB
- separate.pro – DVIPS header, 8.5 KB
- readme – 6.0 KB

Colour separations are supported by:

- cmyk-hax.tex – 23.0 KB

U S A G E

plain:

```
\input poligraf.sty
```

L^AT_EX:

```
\usepackage{poligraf}
```

One has to declare the size of the printed sheet, e.g.:

```
\special{papersize=210mm,297mm}
```

I also find it advisable to use option `-t unknown` from DVIPS program.

```
dvips -t unknown foo.dvi
```

The following commands should be used in order to prepare colour separations:

- `\Separate\CYAN`

or

- `\Separate\MAGENTA`

or

- `\Separate\YELLOW`

or

- `\Separate\BLACK`

If, for some reasons, POLIGRAF package cannot be used in a particular environment, a user may wish to use its DVIPS headers:

```
dvips -h crops.pro -t unknown foo.dvi
```

or

```
dvips -h separate.pro -h crops.pro ...  
... -t unknown foo.dvi
```



wzrost
Szacłowski
 Grudziński kandydat na postę do Sejmu RP

To dla mnie ważne!




Platforma Obywatelska
 Pytaj w każdej sprawie
 tel. (026) 642 90 38
 e-mail: panska@tonet.pl

Platforma Obywatelska

Page (PSTAK): 1/1, Pasa MAGENTA

